



GA GALLET ARCHITECTURE

ARCHITECTURE · PLANNING · INTERIORS

Gallet Architecture is founded on **Integrity + Strength + Partnership**

Firm Overview

Gallet Architecture is a professional Architectural Firm providing Architectural, Interior, and Planning services since 2006. The firm is committed to client-focused design that aligns with stakeholder goals and project needs. In addition to our Commercial and Interior Architecture capabilities, which blend functionality, aesthetics, and brand identity, we offer full-spectrum Science and Technology services, delivering integrated solutions across Industrial, Laboratory, and Mission-Critical Environments.

Gallet Architecture specializes in the design of complex Industrial, Laboratory, and Mission-Critical environments, with a commitment to delivering high-quality, integrated solutions. Our Industrial expertise includes Advanced Manufacturing facility design, Blast-Resistant building envelopes, and EPC design-assist collaboration to support safe and efficient operations in high-risk sectors. We provide full-scope Architectural services for both OSBL (Outside Battery Limits) and ISBL (Inside Battery Limits) facilities, ensuring seamless integration between process infrastructure and supporting buildings. In Laboratory Design, we offer comprehensive planning for R&D and Testing Facilities, including equipment validation and hazardous material inventory documentation to ensure precision and regulatory alignment. For Mission-Critical environments, we deliver resilient Control Suites, Data Centers and Emergency Call Centers designed to maintain operational continuity under demanding conditions. Our teams are actively contributing to today's most critical Energy Projects through innovative design and technical leadership, helping clients meet evolving safety, performance, and compliance standards across the energy landscape.

Our structured approach integrates life safety planning, peer assessments, and compliance-driven documentation to mitigate risk and enhance operational resilience. With global experience across multiple project types and delivery models, Gallet Architecture delivers solutions that protect assets, optimize operations, and elevate industry standards.

Organizations: American Institute of Architects / NCARB / US Gov. SAM / ISNET® Certified

Firm Registrations: Louisiana AF0729 / Texas BR1822 / Florida AR97941 / Mississippi 5811 / Oklahoma CA04356

1235 Camellia Blvd., Ste 101 / Lafayette, LA 70508 / studio@galletarchitecture.com / www.galletarchitecture.com / T +1 337 231 7390

LABORATORY I&D		MISSION CRITICAL		
21 Sc Scandium	53 I Iodine	52 Te Tellurium	6 C Carbon	1 H Hydrogen
INDUSTRIAL & SPECIAL PROJECTS				

Professional Services

Architecture / Consulting

- Commercial Architecture
- Corporate Headquarter Design
- Master Planning
- Student Housing
- Interior Design
- Quality Assurance / Quality Control
- Peer Reviews
- Code Analysis & Life Safety Plan Development
- Specification Assistance
- Design / Documentation Assistance
- Constructability Reviews
- Construction Contract Administration

Science & Technology

- SME-Subject Matter Expert
- Complex Project Coordination/Management
- Design-Build
- EPC Design-Assist

Industrial

- Industrial Planning
- Industrial & Advanced Manufacturing Design
- Blast Resistant Design
- Blast Hardening Assistance
- Jet Fire Resistant Building Envelope Compliance
- LEL/LFL Calculation Assistance
- Electrical Area Classification Layout Drawing Assistance
- Gas Detection Layout Drawing Assistance

Laboratory

- Lab Equipment Validation
- Laboratory | R&D Design
- Laboratory planning
- Hazardous Material Inventory Statement and Summary (HMIS)

Mission Critical

- Control Suite Design
- Mission Critical Design
- 911 Emergency Call Centers
- Data Centers
- Clean Agent Fire Suppression Design Assistance
- Architectural Ballistic Resistance Design

GALLET ARCHITECTURE

ARCHITECTURE · PLANNING · INTERIORS

Client List

Gallet Architecture collaborates with premier clients to deliver innovative, high-performance design solutions. By combining expertise, precision, and cutting-edge technology, we create sustainable, cost-effective and architecturally exceptional outcomes.



Schlumberger



Software/Hardware

Gallet Architecture utilizes state-of-the-art software and hardware solutions to drive innovation, efficiency, and precision across all phases of architectural design and execution. By leveraging advanced Building Information Modeling (BIM) software, they enhance design accuracy, facilitate seamless collaboration, and optimize project workflows. High-performance computing systems, cutting-edge rendering technology, and immersive virtual reality tools enable detailed visualizations and real-time project adjustments. Additionally, Gallet Architecture integrates smart design tools and cloud-based platforms to enhance sustainability, reduce costs, and deliver exceptional architectural results with unmatched efficiency and precision.



BIM + Technology

Gallet Architecture leverages cutting-edge Building Information Modeling (BIM) technology to enhance design precision, streamline collaboration, and optimize project efficiency from concept to completion. By integrating advanced digital tools, they create intelligent, data-driven solutions that improve sustainability, reduce costs, and deliver exceptional architectural outcomes.

Missing Wall Filler

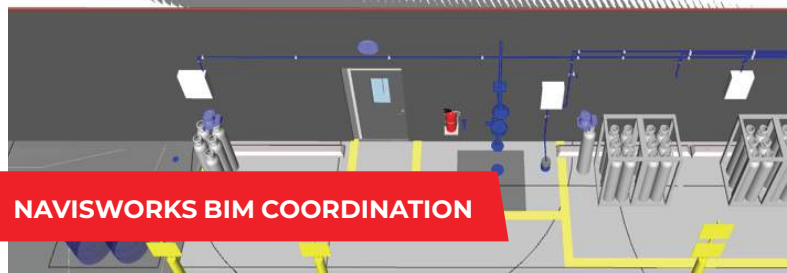
Status	Created
Open	Sep 23, 2021 9:57 PM
Type	Last Updated
Issue	Sep 28, 2021 3:17 PM



Photos

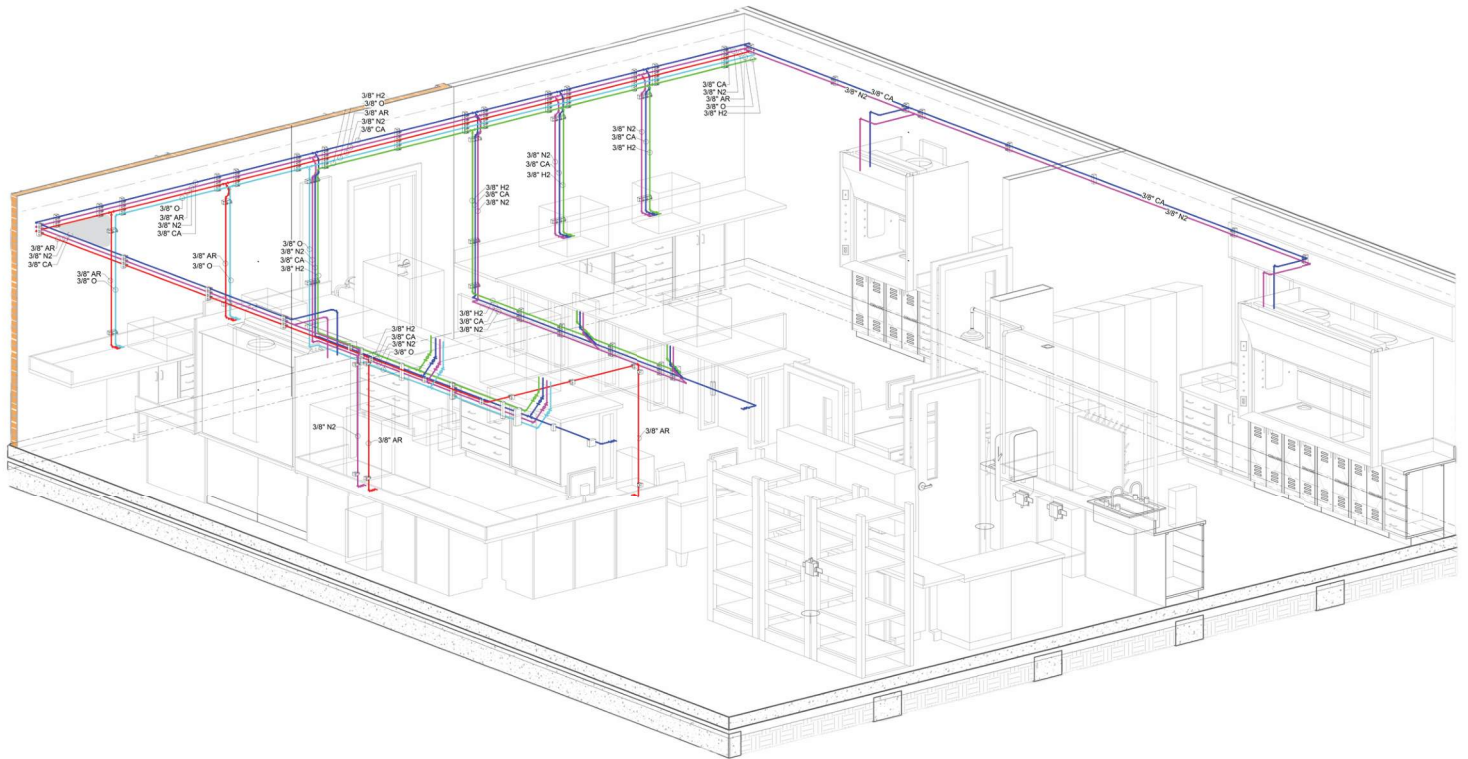


PLANGRID SITE VISIT DOCUMENTATION



Laboratory | R&D

Gallet Architecture's Science & Technology Group continues to deliver quality design with a focus on customer service, while responding to a wide range of complex project requirements. We have provided specialized laboratory design for clients in both the public and private sector. Having a reputation for providing excellence in laboratory design serving the energy, oil & gas, and chemical markets, our wide range of experience allows our team to respond to any end-user needs in R&D, production support, and beyond.



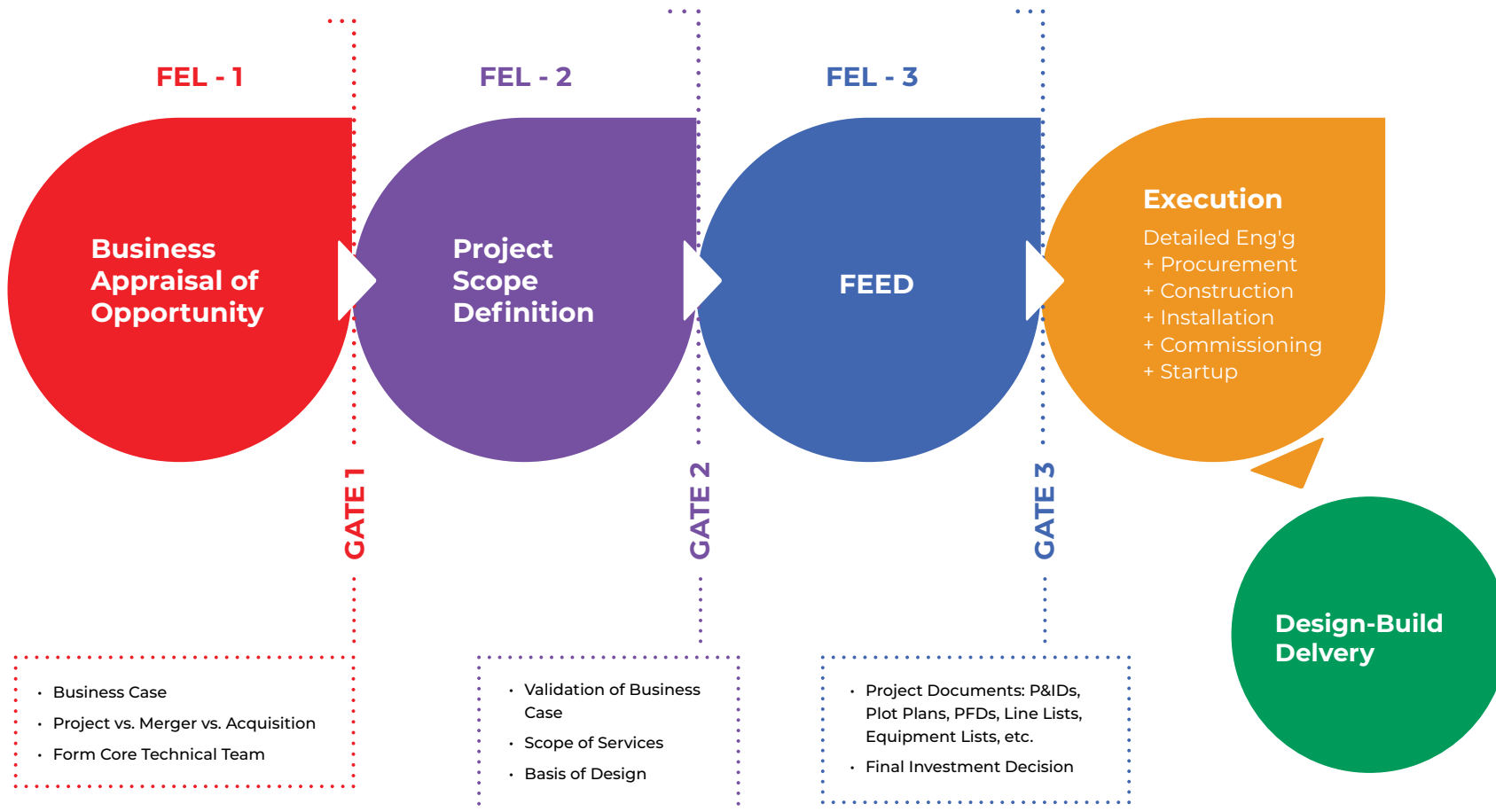
TYPICAL BIM COORDINATION OF LAB GASES

We offer BIM coordination between the mechanical, electrical, and plumbing trades, ensuring that the utility needs of the equipment are met. Gallet Architecture has extensive experience in guiding the project team, from programming and equipment validation to project completion. We work closely with all parties involved, including end users and owner's EH&S teams to Contractors and outside consultants.

WE UNDERSTAND Industrial Delivery Methods

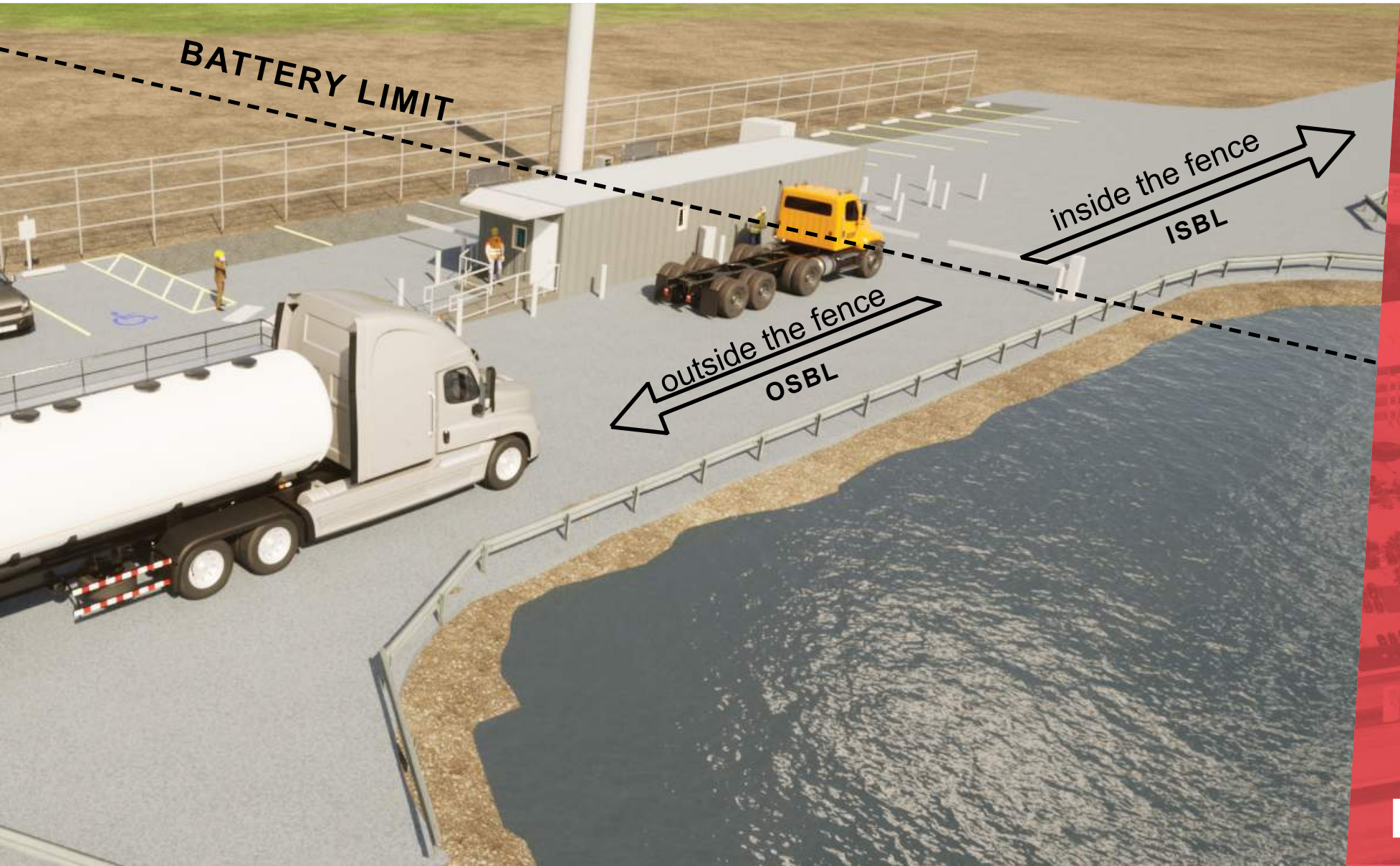
Gallet Architecture has delivered projects via differing delivery methods.

We deliver exceptional projects, whether the Design-Build approach is taken, or EPC delivery method is used for larger industrial clients.



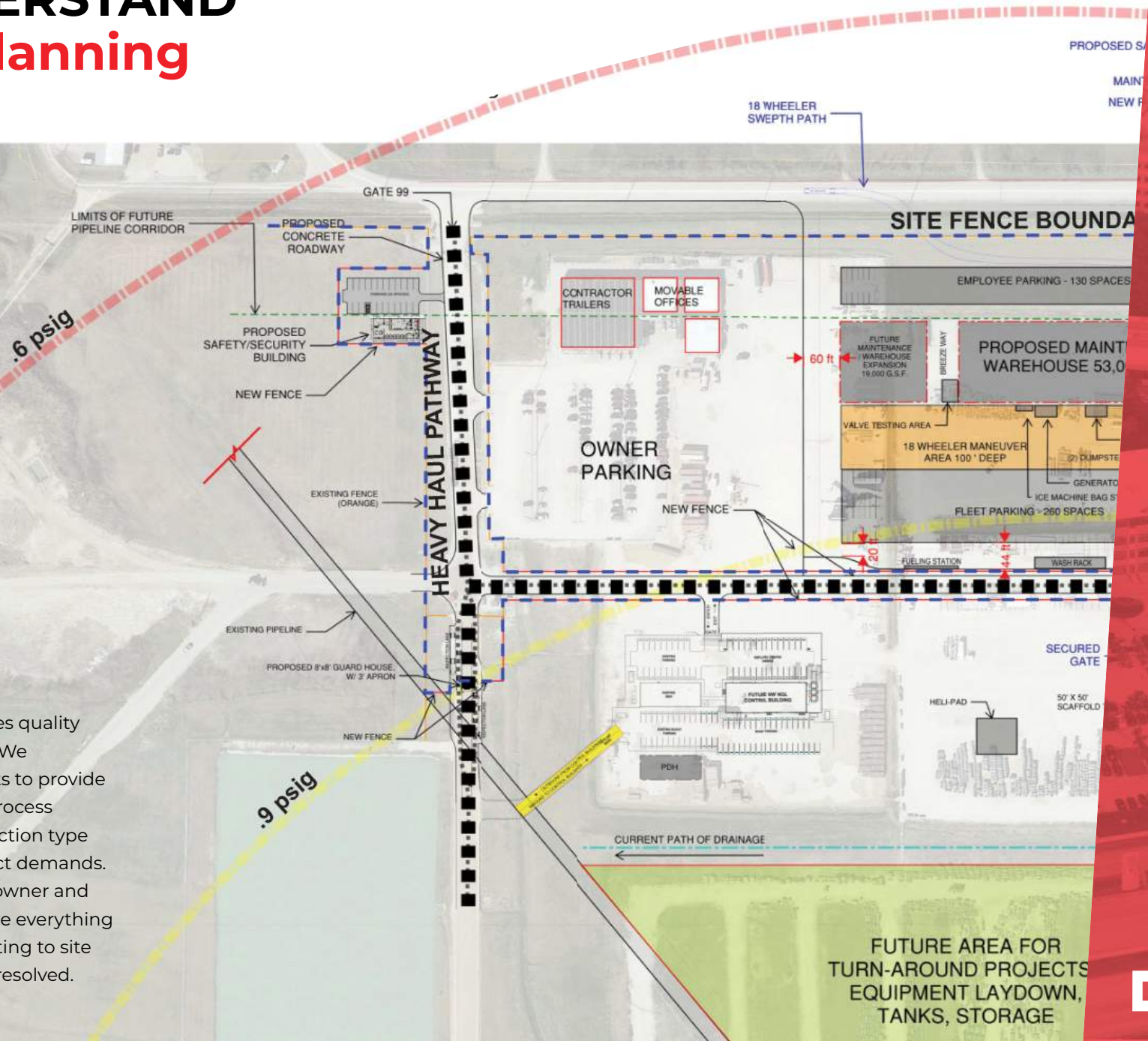
WE UNDERSTAND

“Inside the fence” vs. “Outside the fence”



WE UNDERSTAND Master Planning

Gallet Architecture provides quality master planning services. We collaborate with our Clients to provide the correct site location, process flow, and building construction type needed to meet the project demands. We work closely with the owner and project engineers to ensure everything from the required blast rating to site security is addressed and resolved.





DOW Texas Innovation Center

Lake Jackson, TX

Project Size

1,000,000 sf
 Admin – 230,000 sf
 Amenities – 60,000 sf
 Lab – 568,486 sf
 Central Plant/Warehouse – 60,000 sf

LEED Gold

2,000+ FTE's

Gallet Architecture Services

Project Management
 Design-Build Coordination
 Construction Administration
 Lab Planning
 Code Review
 Chemical Storage Review

Developer

CORE Real Estate, LLC

Scope

R&D Lab
 Master Plan
 Admin
 Amenities
 Central Plant
 Warehouse
 Conferencing
 Cafeteria
 OSA's
 Rooftop Chem Staging

Major Consultants

Structural - Cardno Haynes Whaley
 Civil – Walter P. Moore
 MEP – Wylie Engineering
 Architecture & CA - Gallet Architecture

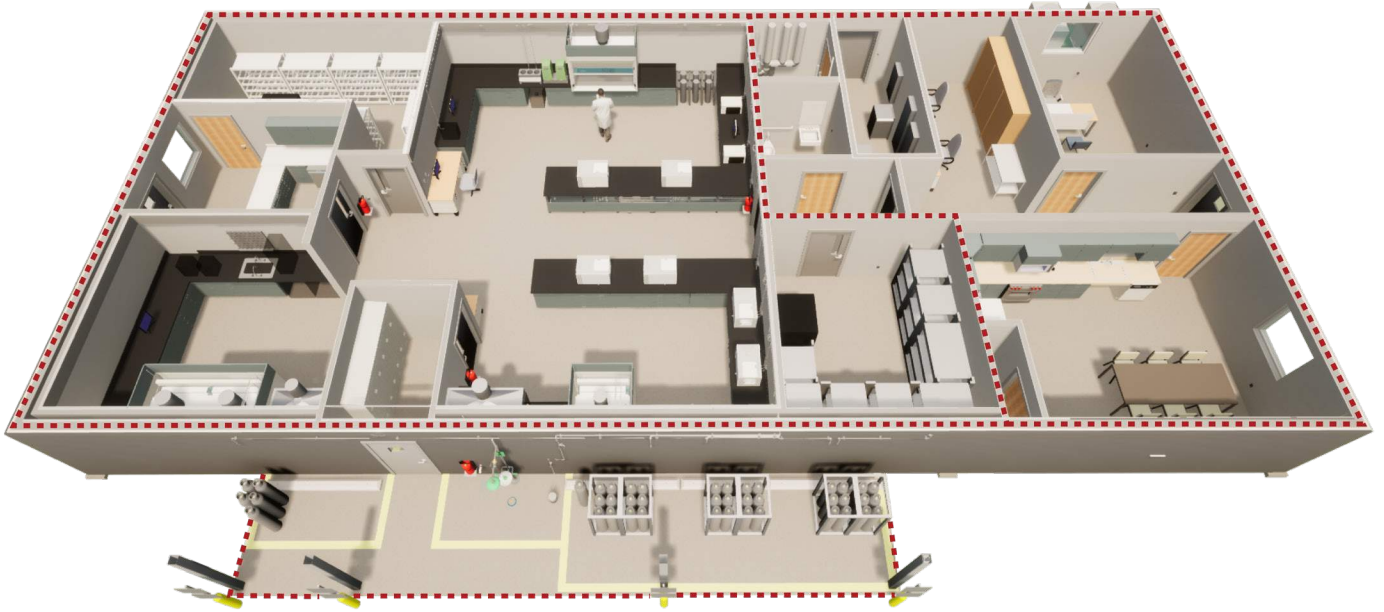
Contractor

Harvey Builders

Architect of Record

Kirksey





Venture Global Plaquemine LNG Lab

Port Sulphur, LA

Project Size

3,495 sf

Gallet Architecture Services

- Project Management
- Design-Build Coordination
- Construction Administration
- Lab Planning
- Code Review
- Chemical Storage Review

Scope

- R&D Lab - 1,839 sf
- OSA - 326 sf
- Blast Design

Major Consultants

- Structural - PSE
- MEP, FP - ADG
- Civil - Duplantis Design Group
- Arch, SME - Gallet Architecture

Contractor

Arkel Constructors

Architect of Record

DDG

SME Architect

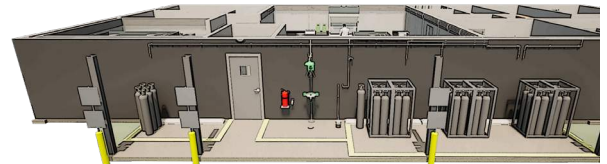
Gallet Architecture

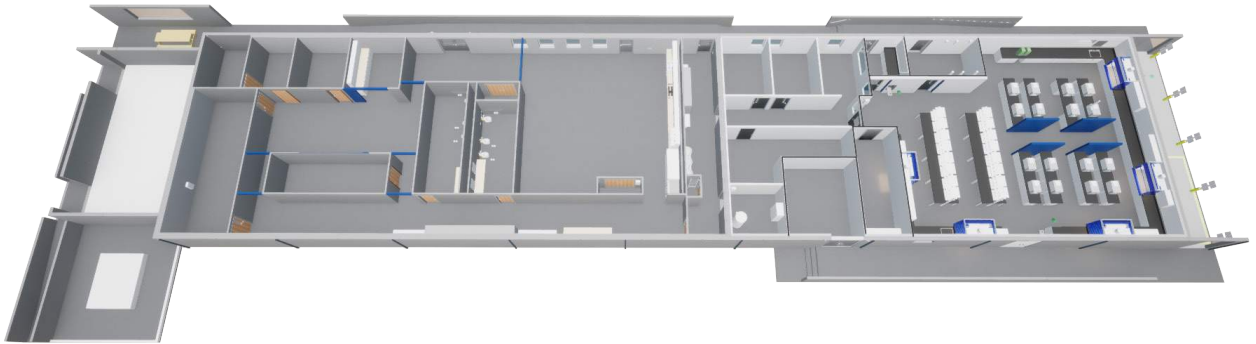
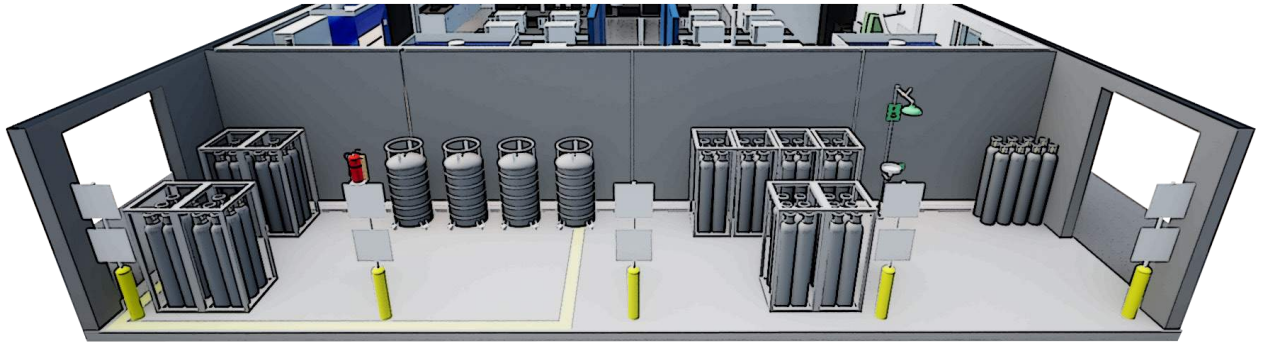
Principal in Charge

Joshua F. Gallet, AIA

Senior Project Manager

Brian Lemmon, AIA, LEED AP
 BD+C





Cheniere Ops & Lab Sabine Pass LNG

Sabine Pass, LA

Project Size

9,858 sf

Gallet Architecture Services

Project Management
Design-Build Coordination
Construction Administration
Lab Planning
Code Review
Chemical Storage Review

Scope

R&D Lab - 4,118 sf
OSA - 546 sf

Major Consultants

Structural - Alfred Miller
MP, FP - Quebedeaux Engineering
E - Hicks Engineering
Civil - Duplantis Design Group
Arch, SME - Gallet Architecture

Contractor

Alfred Miller Contracting

SME Architect

Gallet Architecture

Principal in Charge

Joshua F. Gallet, AIA

Senior Project Manager

Brian Lemmon, AIA, LEED AP BD+C

Architect of Record

DDG



Confidential Oil and Gas Client

Louisiana

Project Size

30,824

Gallet Architecture Services

Project Management
Design-Build Coordination
Construction Administration
Lab Planning
Code Review
Chemical Storage Review

Scope

Testing Lab - 5,450 sf
OSA - 1,300 sf

Major Consultants

Structural - Duplantis Design Group
MP, FP - Associated Design Group
E - Associated Design Group
Civil - Duplantis Design Group
Arch, SME - Gallet Architecture

Contractor

ARKEL

SME Architect

Gallet Architecture

Principal in Charge

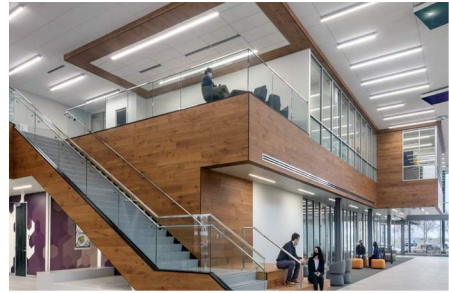
Joshua F. Gallet, AIA

Senior Project Manager

Brian Lemmon, AIA, LEED AP BD+C

Architect of Record

DDG



Pacific Northwest National Laboratory, Energy Sciences Center US Dept. of Energy

Richland, WA

Project Size

140,000 sf

Budget

\$90m

Gallet Architecture Services

- Team Oversight
- QA/QC
- D-B Design Assist
- Code Review
- AEC Coordination
- Lab Planning
- Architecture

Scope

- Research Facility
- Mixed -Use Collaborative Offices & Labs

Delivery Method

Design-Build

Major Consultants

- Structural – ARUP
- MEP – ARUP

Contractor

Harvey Builders

Architect of Record

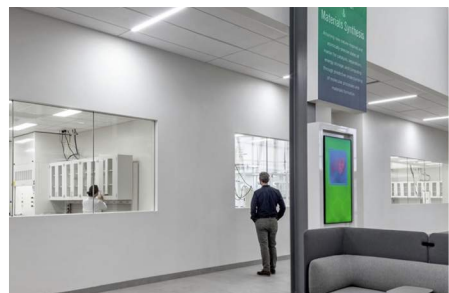
Kirksey

Senior Project Manager

Joshua F. Gallet, AIA

Senior Project Architect

Brian Lemmon, AIA, LEED AP
BD+C





Dow Chemical, Andrew N. Liveris Visitors and Heritage Center

Midland, MI

Project Size

19,100 sf

Delivery Method:

Design/Negotiated Contract

Gallet Architecture Services

- QA/QC
- Code Review
- AEC Coordination
- On-Site Coordination
- VideoWall Laminar Flow Cooling
- Advanced Lighting Design
- Architecture

Major Consultants

- Structural – Cardno Haynes Whaley
- MEP – WSP
- Civil - Walter P. Moore
- Multimedia Content Creator - Centre Screen
- Technology - 4B

Scope

- 52 Foot Video Wall
- Interactive Heritage Wall
- Humidity Controlled Displays
- Reception Area
- Badging
- Conference Rooms
- Connectors to Campus Buildings
- Reflecting Pond
- Dow Park

Contractor

Kirco Manix

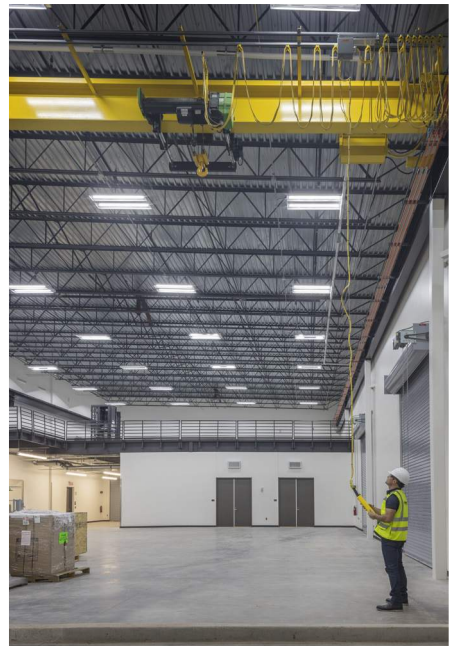
Architect of Record

Kirksey

Senior Project Architect

Joshua F. Gallet, AIA





ME Global Control Facility

Freeport, TX

Project Size:
 55,000 sf

Delivery Method
 Engineer-Procure-Construct (EPC)

Gallet Architecture Services

- Team Oversight
- QA/QC
- D-B Design Assist
- Code Review
- AEC Coordination
- Lab Planning
- Control Suite Planning
- Architecture

Major Consultants

- Structural – Pinnacle Structural
- MEP – Infinity
- Technology - 4B

Contractor

Harvey Builders

Architect of Record

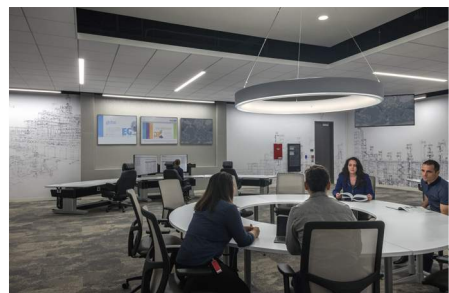
Kirksey

Scope

- Control Building
- QA/QC Lab
- Administration
- Maintenance
- Guard House

Senior Project Manager

Joshua F. Gallet, AIA





Texas Tech University, School of Veterinary Medicine

Amarillo, TX

Project Size

- 240,000 sf
- Stockyard/Stables - 100,000 sf
- Barns/Support Str - 25,000 sf
- Classroom/equine/bovine facilities - 38,000 sf
- Main Campus Building - 200,000 sf

Budge:

\$90M

Gallet Architecture Services

- Team Oversight
- QA/QC
- D-B Design Assist
- Code Review
- AEC Coordination
- Lab Planning
- Architecture

Delivery Method

Design/Bid

Scope

- Classrooms
- Offices
- Lobby
- Research Labs
- Animal Holding
- Exam Rooms
- Surgery Rooms
- Bovine Center
- Equine Center

Major Consultants

- Structural – Ensignt
- Civil – OJD Engineers
- MEP – Chambers Engineering, Inc.

Contractor

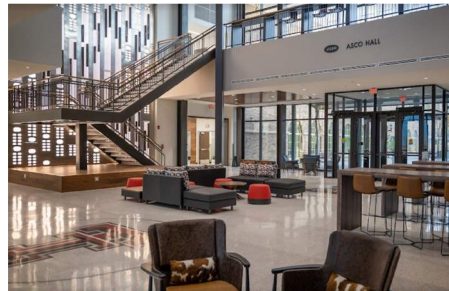
Western Builders of Amarillo, Inc.

Architect of Record

Kirksey

Senior Project Manager

Joshua F. Gallet, AIA





Dow SCO St. Charles Operations

St. Charles, LA

Project Size

187,000 sf

Budget

\$100m

Gallet Architecture Services

- Team Oversight
- QA/QC
- D-B Design Assist
- Code Review
- AEC Coordination
- Lab Planning
- Architecture
- Blast Design
- Mission Critical

Delivery Method

- Developer, Design-Build
- Major Consultants:
- Structural - Pinnacle Structural
- Civil - Duplantis Design Group
- MEP - ARUP

Scope

- Cafeteria
- Clinic
- Testing Lab
- Office
- Conferring Center
- Fitness Center
- 22,560 sf Control Suite

Contractor

Harvey Builders

Architect of Record

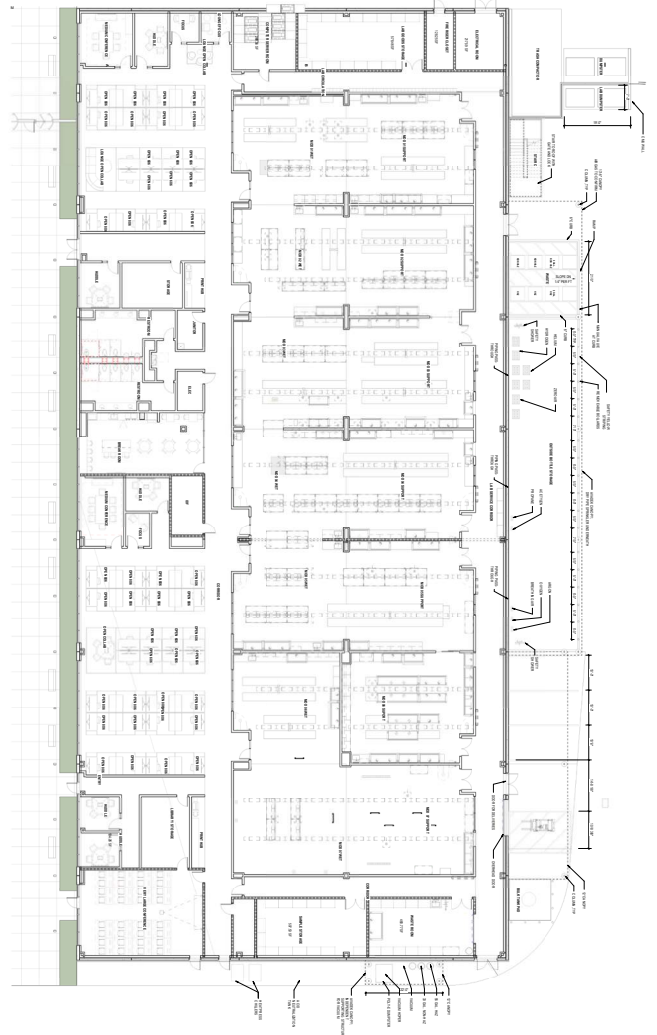
Kirksey

Senior Project Manager

Joshua F. Gallet, AIA

Control Room / SME

Brian Lemmon, AIA, LEED AP
BD+C





Enterprise Products Partners, L.P. Mont Belvieu Caverns BRM Control Suite

Lake Jackson, TX

Project Size

4,211 sf

Gallet Architecture Services

- Master Planning
- Control Suite Planning
- EPC Design Assist
- Code Review
- Architecture
- Interiors
- BRM Design Coordination

Scope

- Control Suite
- Permitting
- Lockers
- Break Room
- Admin
- Rack Room
- Restrooms
- Associated parking for large and oversized vehicles
- Gen Power
- Antenna-Comms

Delivery Method

Engineer-Procure-Construct (EPC)

Major Consultants

- Structural – Pinnacle Structural
- Civil – Duplantis Design Group
- MEP – ARUP

Contractor

Gallant Builders

Architect of Record

Kirksey

**Senior Project Manager /
 Project Executive:**

Joshua F. Gallet, AIA





Enterprise Products Partners, L.P. Terminal Facility

Morgan's Point, TX

Project Size

50,745 sf
Main BRM Guardhouse – 876 sf
Port BRM Guardhouse – 303 sf
PEMB Lab/Warehouse – 19,195 sf
Tilt Wall Admin/Controls – 30,371 sf

Gallet Architecture Services

Master Planning
Lab Planning
Control Suite Planning
EPC Design Assist
Code Review
Chemical Storage Review
Army Core of Engineers Coordination
Architecture
Interiors

Delivery Method

Engineer-Procure-Construct (EPC)

Major Consultants

Structural – Pinnacle Structural
Civil – Duplantis Design Group
MEP – ARUP

Scope

Administration and Control Suite
Tilt Wall Blast Resistant Building
PEMB Blast Resistant Laboratory
Warehouse
Maintenance Shop
Fire House
Outdoor Chemical Storage Area
Blast Resistant Modular Main Guardhouse/
Security
Blast Resistant Modular Port Guardhouse
Plant Parking area to accommodate oversized vehicles

Contractor

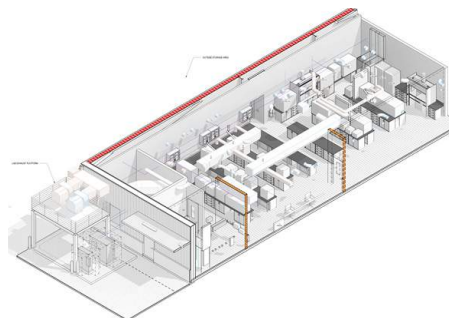
Gallant Builders

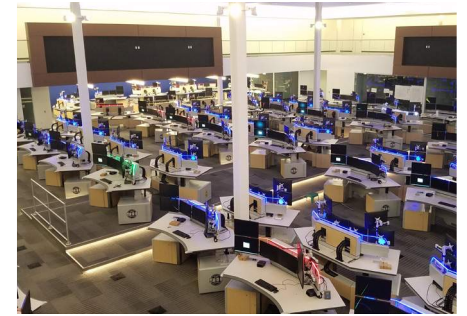
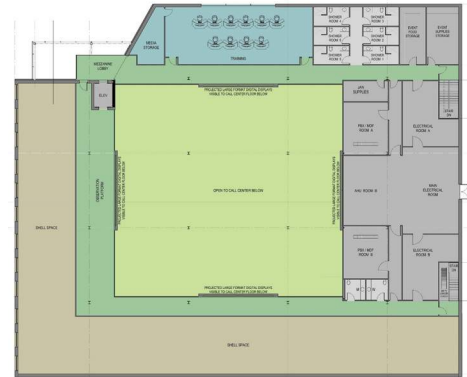
Architect of Record

Kirksey

Senior Project Manager / Project Executive:

Joshua F. Gallet, AIA





Harris County Sheriff's Office 911 Emergency Call Center

Harris County, TX

Project Size

42,000 sf

Gallet Architecture Services

- Master Planning
- Call Center Suite Planning
- Code Review
- Architecture
- Interiors

Delivery Method

Construction Manager at Risk (CMR)

Major Consultants

- Structural – Walter P. Moore
- Civil – Nathelyne A. Kennedy & Associates
- MEP – Johnston

Scope

- Administration and Control Suite
- Tilt Wall Hurricane Resistant Building
- Impact Rated Antenna Farm
- 300 ft tall Communication Tower
- Bullet Rated Transaction Counter

K-rated Crash Test Bollards

Impact rated Exterior window with Hurricane Shutters

2 Natural Gas Generators

1 Bi-Fuel (Ng + Diesel) Generator

Geothermal Cooling

LID Storm Water Management

2N redundant Mechanical, Electrical, and Technology systems

Contractor

Turner Construction

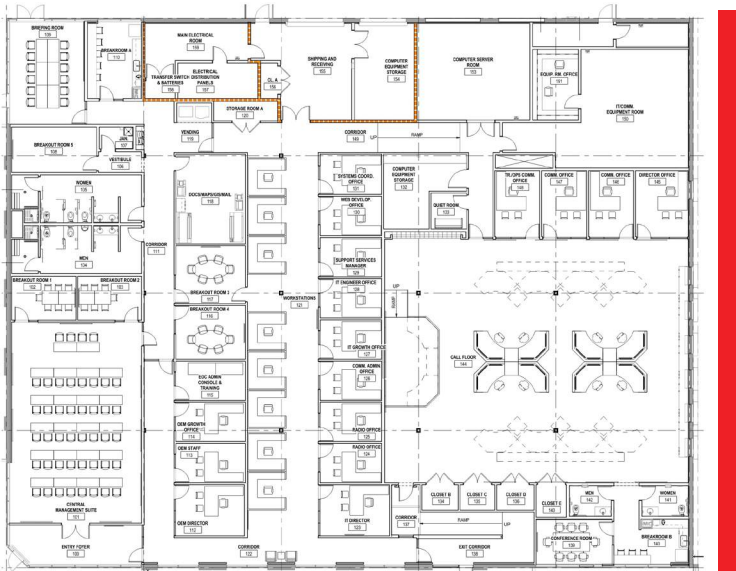
Architect of Record

Kirksey

Senior Project Manager

Brian Lemmon, AIA





Bastrop County Mike Fisher 911 Emergency Call Center

Harris County, TX

Project Size

12,000 sf

200 ft tall Communication Tower

1 Diesel Generator

Gallet Architecture Services

- Programming
- Call Center Suite Planning
- OEM Space Planning
- County IT Department
- Code Review
- Architecture
- Building Hardening
- Interiors
- Building Re-Roof

N+1 redundant Mechanical, Electrical, and Technology systems

Contractor

Speed Fab-Crete

Architect of Record

Kirksey

Senior Project Manager

Brian Lemmon, AIA

Delivery Method

Construction Manager at Risk (CMR)

Major Consultants

- Structural – Hanes Whaley
- MEP – Telios Engineering
- Low Voltage - 4B Technology

Scope

- Administration and Control Suite
- Interior Renovation
- Exterior Refresh





Joshua François Gallet, AIA, NCARB

Founder | Principal

Josh has been Principal of Gallet Architecture for over 20 years, providing Architectural, Interior, and Planning services. He has broad experience in leading design teams on Laboratory / R&D, and Industrial & Special Projects, as well as leading Design efforts for Large and Complex Design-Build and EPC Projects. Josh has a depth of experience in managing and delivering multiple project types in multiple project delivery scenarios around the world. His early career entailed being involved in his family's construction company as a 3rd generation contractor. This has allowed him a unique understanding of construction processes, detailing, and problem solving that is only gained by hands-on experience. Gallet Architecture provides specialized design solutions for global corporations and high-profile clients, delivering innovation, precision, and excellence at scale. Gallet Architecture also provides Consulting Architectural Services, and Subject Matter Expert (SME) services to Architectural Firms requiring an added level of expertise.

Expertise

Commercial Architecture
Complex Project Coordination/Management
Corporate Headquarter Design
Construction Contract Administration
Design-Build
EPC Design
Industrial & Advanced Manufacturing Design
Industrial Planning
Interior Design
Peer Reviews
Planning
Quality Assurance / Quality Control
Blast-Resistant Design
Chemical / Lab
Code Analysis
Laboratory | R&D Design
AEC Coordination
Control Suite & Mission Critical Design
Constructability Reviews
Subject Matter Expert

Registrations/Organizations

Architect - Louisiana 6363, Texas 24249, Oklahoma A09010,
Florida AR97941, Mississippi 5811
NCARB - Certificate No. 62666
American Institute of Architects
TWIC - Transportation Worker Identification Credential

Education

University of Louisiana at Lafayette
Bachelor of Architecture 1999

Work Experience

Gallet Architecture – TX, LA, FL
Principal
2006 - Present, 16 yrs

Kirksey Architecture – TX (Consultant)
Senior Project Manger Large and Complex Projects, Industrial and
Special Projects Lead, Director of Design-Build
2017- 2020, 3 yrs

Professional Experience

26 years of
Architectural Experience

Air Products Darrow Blue
Energy | Lab / Chemical
Storage Warehouse
Geismar, LA

Cheniere Ops & Lab Sabine
Pass LNG | Laboratory - SME
Sabine Pass, LA

Clariant OMS | Deep Water Lab
The Woodlands, TX

Confidential Petrochemical
Client | Lab/Warehouse/
Administration Building
Dhahran, Kingdom of Saudi
Arabia

Confidential Petrochemical
Client | Lab/Warehouse/
Administration Buildings +
Parking Tower and Central
Plant
Katy, TX

Corrosion Resistant Alloys |
OCTG Manufacturing Facility
Houston, TX

The Dow Chemical Company
Global Headquarters
Midland, MI

The Dow Chemical Company
Visitors Center
Midland, MI

Dow Chemical – Texas
Innovation Center
Lake Jackson, TX

Dow ME Global Control Facility
Freeport, TX

Dow Middle East Innovation
Center | King Abdullah Science
and Technology University
Thuwall, Saudi Arabia

Dow MRO/Warehouse
Hahnville, LA

Dow Orion | Multiple Industrial
Projects
Freeport, TX

Dow St. Charles Operations
| Laboratory / Offices / Med
Center
Hahnville, LA

Enterprise Products | East
Storage Blast - Resistant
Module Control Building
Mont Belvieu, TX

Enterprise Products | East
Storage Warehouse
Mont Belvieu, TX

Enterprise Products
Hatcherville | Maintenance/
Warehouse/Commons
Chambers County, TX

Enterprise Products
Hatcherville | Industrial Site
Master Planning
Chambers County, TX

Enterprise Products
Hatcherville | Security Building
& Guard House
Chambers County, TX

Enterprise Products Morgan's
Point | Lab / Administration /
Control Suite
LaPorte, TX

Enterprise Products North
Storage | Control Room
Mont Belvieu, TX

Enterprise Products Baytown |
Admin Renovations
Baytown, TX

Enterprise Products | BRM Gate
M21 Security Building
Mont Belvieu, TX

Enterprise Products | Testing
Labs
Breaux Bridge, LA

IDOM UBE | Laboratory,
Control / Building
Westwego, LA

Liberty Energy | Laboratory
Williston, ND

OXY Vinyls | Administration
Building
Deer Park, TX

Pacific Northwest National
Laboratories |
Richland, WA

Refined Technologies
International (RTI) | Port Arthur
Office
Port Arthur, TX

Renewable Energy Group |
Laboratory
Geismar, LA

Rubicon | Laboratory
Geismar, LA

Schlumberger SLB | Chemical
Storage Building
Lafayette, LA

Targa Resources - Office and
Training
Mont Belvieu, TX

Targa Resources / Mont Belvieu
| Control Building
Mont. Belvieu, TX

Targa Resources / Mont Belvieu
| Laboratory Programming
Mont Belvieu, TX

Targa Resources / Mont Belvieu
| Train 11 Administration/
Warehouse
Mont Belvieu, TX

Texas Tech University | School
of Veterinary Medicine
Amarillo, TX

Venture Global Calcasieu Pass
LNG | O&M Offices
Cameron, LA

Venture Global Plaquemines
LNG | Chemical Storage
Warehouse
Port Sulphur, LA

Venture Global Plaquemine
LNG | Laboratory
Port Sulphur, LA

Williams | Control Room
(Williams Tower)
Houston, TX

WR Transformers |
Manufacturing Facility
Tomball, TX

HEB Industrial | Multiple
Projects
Houston, TX



Brian Lemmon, AIA, LEED® AP BD+C™

Senior Architect

Brian has been practicing Architecture for 19 years. Early in his career, he was involved in student housing design across the State of Texas, then expanded his experience into Mission Critical, Industrial, and Laboratory Design. Having provided expert design services to clients ranging from State Institutions, to Federal Research Groups and Fortune 500 Companies, his project experience expands from million square foot research campuses, to thousand square foot lab renovations. Brian's attention to detail, while still maintaining focus on overall project goals, gives him the skills needed to guide a project from programming and planning through to project closeout.

Expertise

Laboratory | R&D Design
Interior Design
Industrial Planning
Planning
Industrial & Advanced Manufacturing Design
Construction Contract Administration
Control Suite & Mission Critical Design
Design-Build
Emergency Call Centers
Code Analysis
Commercial Architecture
AEC Coordination
Corporate Headquarter Design
Quality Assurance / Quality Control
Student Housing
Peer Reviews
Constructability Reviews
Data Center Design and Planning

Registrations/Organizations

Architect - State of Texas 21084
American Institute of Architects - Certificate No. 30368239
LEED AP BD+C
TWIC - Transportation Worker Identification Credential

Education

University of Houston - College of Architecture
Bachelor of Architecture, Cum Laude - 2004

Work Experience

Gallet Architecture
September 2023 - Present

Perkins&Will
April 2022 - September 2023, 1 year 6 months

Kirksey Architecture
March 2007 - April 2022, 15 years 2 months

Perspectiva Architects
2005 - 2007, 2 years

Professional Experience

21 years of
Architectural Experience

Air Products Darrow Blue Energy | Lab / Chemical Storage Warehouse
Geismar, LA

Bastrop County Emergency Communications Center (911, Office of Emergency Management, and IT Center, Mike Fisher Building)
Bastrop County, TX

Cheniere Ops & Lab Sabine Pass LNG | Laboratory - SME
Sabine Pass, LA

City of Austin Energy | Decker Power Plant Back Up Control Center
Austin, TX

Confidential Life Science Lab
Houston, TX

CyrusOne Houston West Building No. 1
Houston, TX

CyrusOne Houston Galleria
Houston, TX

CyrusOne West Campus Expansion
Houston, TX

Dow Texas City Operations Building
Texas City, TX

Dow St. Charles Operations Office (Control Center only)
St. Charles, LA

Dow Midland Visitor and HQ to BSC Connector
Midland, MI

Dow Seadrift Office Building
Seadrift, TX

Dow Corporate HQ Michigan
Midland, MI

Dow ME Innovation Center at KAUST
Thuwal, Saudi Arabia

Enterprise Products | East Storage Blast - Resistant Module Control Building
Mont Belvieu, TX

Enterprise Hatcherville - Frac 11 Control Building
Chambers County, TX

Enterprise Products Morgan's Point | Lab / Administration / Control Suite
LaPorte, TX

Enterprise Products North Storage | Control Room
Mont Belvieu, TX

Enterprise Products Baytown | Admin Renovations
Baytown, TX

Harris County Sheriff's Office 911 Call Center
Houston, TX

Kirksey Expansion 2007
Houston, TX

Lake Pointe Data Center
Sugar Land, TX

Midwest Laboratories Renovation & Expansion
Omaha, NE

OQ Operations Office Building
Bay City, TX

PNNL ESC - Pacific Northwest National Laboratory Energy Services Capability Project (Department of Energy National Lab)
Richland, WA

Prairie View A&M Fabrication Facility
Prairie View, TX

Refined Technologies International (RTI) - Port Arthur Office
Port Arthur, TX

Rubicon Lab
Geismar, LA

Sam Houston State Lone Star Hall and Parking Lot
Huntsville, TX

Targa Resources / Mont Belvieu | Control Building
Mont. Belvieu, TX

Targa Resources - Mont Bellvieu Laboratory Programming
Mont Bellvieu, TX

Targa Resources - Train 11 Administration/Warehouse
Mont Belvieu, TX

Texas State University, Chautauqua Hall and Gaillardia Hall Residence Life Housing Project
San Marcos, TX

Texas Tech University Terry Fuller Petroleum Engineering Research Building
Lubbock, TX

University of Houston Graduate & Professional housing (Calhoun Lofts / University Lofts)
Houston, TX

University of South Alabama College of Medicine
Mobile, AL

University of Texas San Saba Hall
San Antonio, TX

Venture Global Plaquemine LNG Lab - Laboratory/Blast - SME, AOR
Port Sulphur, LA

Venture Global Plaquemines LNG Chemical Storage Warehouse
Port Sulphur, LA

Venture Global Calcasieu Pass LNG - O&M Offices
Cameron, LA

WR Transformers | Manufacturing Facility
Tomball, TX

HEB Industrial | Multiple Projects
Houston, TX



Nagib Madi, AIA, LEED® Green Associate™

Senior Project Manager

Nagib has been practicing Architecture for 28 years. He is an experienced Senior Project Manager with a long history of managing complex projects for a variety of clients and building types. His recent experience includes building envelope assessment, design assistance, commissioning, as well as construction risk services.

Registrations/Organizations

Architect - State of Texas 25045

American Institute of Architects - Certificate No. 38490277

LEED® Green Associate™

TWIC - Transportation Worker Identification Credential

Expertise

Research Laboratory

Interior Design

Industrial & Advanced Manufacturing Design

Healthcare

Construction Contract Administration

Collegiate

Design-Build

Construction Risk

Code Analysis

Commercial Architecture

AEC Coordination

Corporate Headquarter Design

Quality Assurance / Quality Control

Building Envelope Commissioning

Education

University of Liverpool – School of Architecture

Bachelor of Architecture

McGill University - School of Architecture

Graduate Diploma in Architecture

University of Alexandria - Faculty of Engineering

BSc in Architectural Engineering

Work Experience

Gallet Architecture

February 2025 - Present

Terracon

November 2022 - January 2025, 2 year 3 months

Kirksey Architecture

September 2014 - October 2022, 8 years 1 months

The Wingfield/Sears Group

January 2011 - August 2014, 3 years 7 months

Taylor Madi Design

January 2003 - December 2010, 8 years

Professional Experience

28 years of Architectural Experience

ABB Ventyx Corporate Interiors
Sugar Land, TX

Air Products Darrow Blue
Energy - Lab - Chemical
Storage Warehouse
Geismar, LA

Berkley Eye Center Interior
Renovations
Houston, TX

Dow Chemical - Texas Innovation
Center
Lake Jackson, TX

Dow Corporate HQ Michigan -
LEED® Silver
Midland, MI

Eagle Analytical Laboratory
Facilities
Houston, TX

Enterprise North Storage -
Control Room
Mont Belvieu, TX

First Choice Emergency Room
Houston, TX

Flooring System Office Building
& Warehouse
Houston, TX

Greene's Energy Group Corporate
Interiors
Houston, TX

Harris County Historical Riverside
Hospital
Houston, TX

Harris County Peden Historic
Office Building
Houston, TX

JAM Mykawa Office Building and
Hazmat Storage Facility
Houston, TX

Multiple places of Worship
Harris County, TX

Multiple Office/Warehouse
Facilities - Design Build
Harris County, TX

Multiple low rise Office Buildings
Harris County, TX

Rubicon Lab
Geismar, LA

Schlumberger Katy Tech Center -
Machining Facility
Katy, TX

Targa Resources - Train 11
Administration/Warehouse
Mont Belvieu, TX

TAS Commercial Concrete HQ
Houston, TX

Telephone Road Elderly
Apartments Renovations
Houston, TX

Texas Jasmine, Whole Sale
Grocery Supplier
Houston, TX

UH Melcher Life Sciences
Building Addition and Research
Laboratory
Houston, TX

UTMB John Sealy Hospital
Renovation
Galveston, TX

Venture Global Calcasieu Pass
LNG - O&M Offices
Cameron, LA

Venture Global Plaquemines
LNG Chemical Storage
Warehouse
Port Sulphur, LA

WR Transformers |
Manufacturing Facility
Tomball, TX

HEB Industrial | Multiple
Projects
Houston, TX